



ASSISTEC
PRESENTS
Green[®]
delivery system

..When the Outdoor becomes Indoor..

www.greendeliverysystem.com



Green Relax. It's growing !
delivery system www.greendeliverysystem.com



General characteristics of GDS G3, G4 & G5 models

The models GDS-G3 and GDS-G4 can run up to six bottles of liquid fertilizers / nutrients and up to five bottles for the GDS-G5.

- Four inputs are intended for mineral or organic fertilizer (Three for the G5)
- Two for higher concentration (thicker) liquid fertilizers
- One entry reserved for the cleansing process (osmosis or demineralized water recommended).

Three programming modes are available

- **Ad-Hoc dosing mode** : manually choose your desired dosage using the touch screen and inserting the nutrients needs for your plants.
- **Programmed mode** : Allows the input hundreds of dosing programs according to either your own feeding schedule or the manufacturer's feeding schedule (as posted on their websites) from one to twenty weeks from growth to bloom periods and the flush.
- **Automatic Scheduling mode** : This mode allows setting an automatic start-up time throughout the duration of the feeding culture, as defined in the programmed mode.



General characteristics of GDS G3, G4 & G5 models

Nutrients delivery protocol

- **First Cycle, Preparation Cycle** : which is the flow of a certain quantity of clean water in the system, providing a ready supply of water in the beaker.
- **Second Cycle, Nutrient Delivery Cycle** : this phase relates to the volumetric measure (dosage) of each programmed (or manually inputted) amount of nutrients.
- **Third Cycle, Cleaning Cycle** : this cycle is cleaning the system (distribution and volume-meter) by injecting clean water between consecutive deliveries of different nutrients.
- **Fourth Cycle, End Cycle** : this cycle performs the final cleaning of the system (distribution and measurement) by injecting three volumes of clean water. In addition, this final phase will stop the machine and fill it with clean water in the circuits, thus avoiding all problems of crystallization and clogging of the delivery channels.

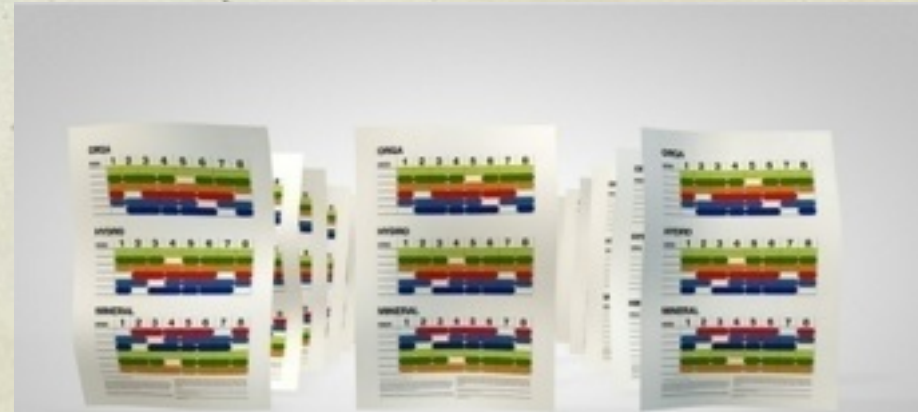


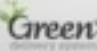
Avantages

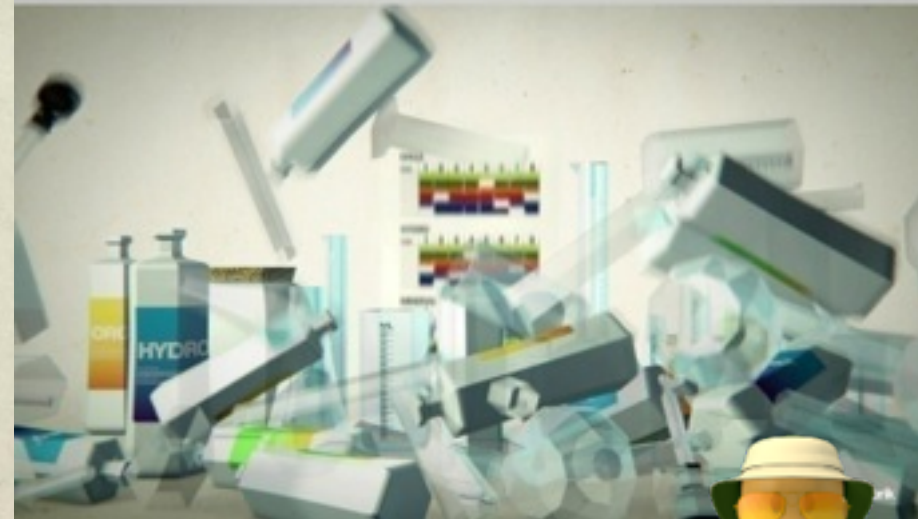
Introducing the first fully automated nutrient dosing and mixing system, that can be adapted to any plant variety.

Green Delivery System brings you increased efficiency, accuracy and traceability of all your indoor and outdoor feeding schemas programmed.

- Innovative, smart, fast and accurate
- Dosage ranging from 0.1 ml / L to 6 ml / L of water.
- Frees the user from the constraints of preparation, handling.
- Manages all your feeding schedules, which avoids all dosing errors.
- Automatic start-up and programmable system.
- Supplied with the specific bottle caps (depending on manufacturer nutrients) and pre-program of your specific feeding schedule.



 **Relax. It's growing !**

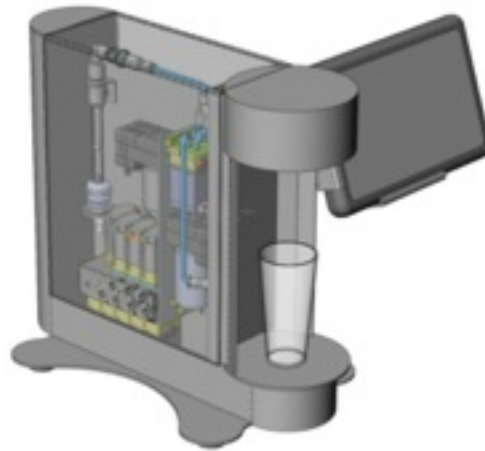
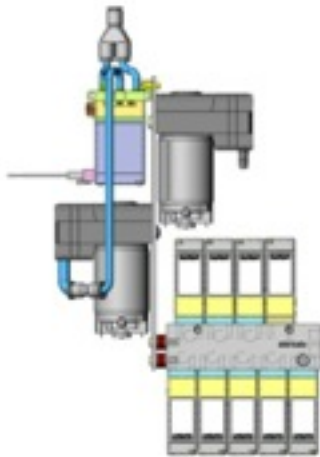


Our industrial partner



Simple and robust, Green Delivery System is designed and built using state of the art technologies used in chemical analytical laboratories .

The vast experience and proficiency, gained by a former engineer at CNRS (The French National Center for Scientific Research) and Christian Bürkert GmbH, are translated in the GDS capabilities of fluid volumetric control, purity and precision.



GDS-G3 Main Characteristics

- Management of 6 Soluble Nutrients bottles
- Concentration : 0,1ml/L to 6ml/L of water
- Manual mode and Programming mode
- Automatically delivers an accurate dosage of concentrated solution for water dilution (1L to 10L)
- Frees users from constraints :
 - preparations, manipulations, errors
 - fertilization schedules management
- No contamination risks between nutrients
- Auto-cleaning system between each nutrients deliveries



Innovative, smart !



GDS-G4 Main Characteristics

- Management of 6 Soluble Nutrients bottles
- Concentration : 0,1ml/L to 6ml/L of water
- Manual mode and Programming mode
- Automatically delivers an accurate dosage of concentrated solution into tanks from 10L up to 250L
- Frees users from constraints :
 - preparations, manipulations, errors
 - fertilization schedules management
- No contamination risks between nutrients
- Auto-cleaning system between each nutrients deliveries



User-friendly and ergonomic !

GDS-G5 Main Characteristics

Combine the Technologies of GDS-G3 et GDS-G4 Models



Relax, it's growing !